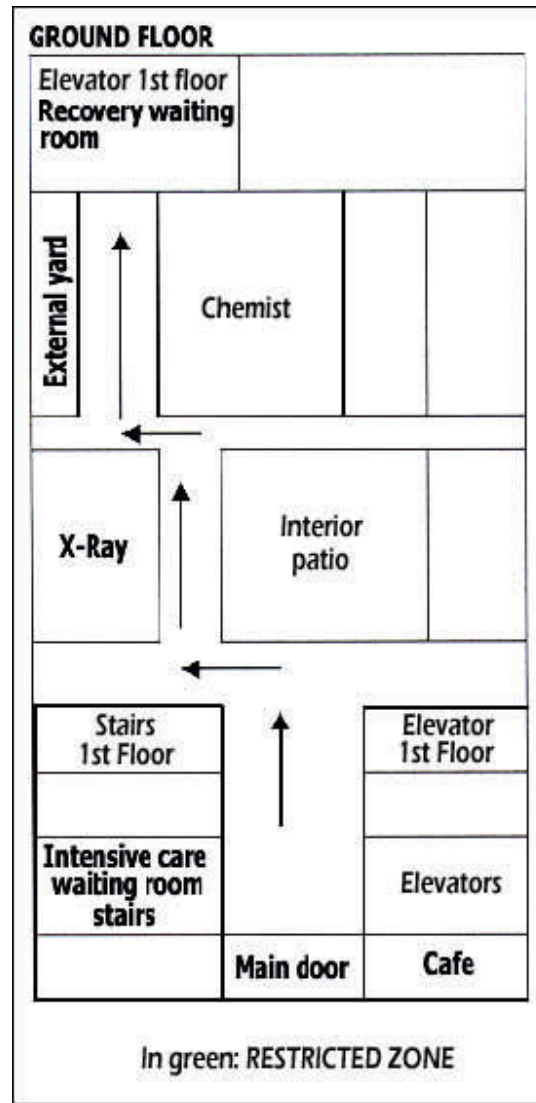


In Green: RESTRICTED ZONE



Hospital Universitario Virgen de la Victoria. Málaga



Information for the relatives of the patients taken into the post - surgical recovery

Hospital Universitario Virgen de la Victoria. Málaga

## Information for the relatives.

Your relative has been taken into hospital in the department of post - surgical Recovery because he needs special treatment and intensive care, due to the kind of operation that has been done, to better his previous state of health.



He is going to be attended 24 hours a day by a highly qualified team of specialists, physicians and nurses.

Because of the intensity and continuity of the care, the norms of functioning of this department are different from the other departments of the hospital. The needs of these patients are more specialized, they need more attention time and care. This is the reason why the time of visiting is more restricted than in the rest of the hospital.



### >When will I be informed by the doctor?

The doctor responsible for your relative will give you all the information about his condition, in the waiting room you will be told by telephone.

After being taken into recovery.

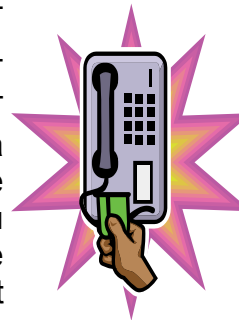
D a i l y (including Sundays and public holidays 13:30 p.m.) Although you will have been informed by the surgeon who has done the treatment, it is very important that you also receive information from the anesthetist because he is the doctor responsible for your relative during his stay in Recovery.



### >Could I be informed of other schedules?

You will be informed at the appointed time except in the case where the changes are important in the state of the patient and they could not wait for the usual schedule of information.

That is why IT IS VERY IMPORTANT that you give us a contact telephone number so that you Donet have to be permanently present the waiting room.



### >What time could I see my relative?

You will be able to visit your relative three times a day:  
At 8:30 a.m. To see how he has spent the night.  
From 16:00 p.m. To 16:30 p.m.  
From 20:00 p.m. To 20:30 p.m.

We ask you please to wait in the waiting room until you are told you can visit your relative.

(annexe I-II)

We will follow this visiting schedule in the usual way. However it is possible under exceptional circumstances (urgent attention of any patient, recent admission, etc.) this schedule may be changed.

In this case you would come in as soon as the situation is resolved.

### >How many people might come in?

Only two visitors will be allowed in the room at a time. In case there were more than two they would wait quietly outside the department so as not to disturb the functioning of the other departments (operating theatre, revival, etc.)

We recommend that only close relatives visit the patients because they are the ones who can give him more care and emotional support.

